



BIOSECURITY PROTOCOLS COVID-19



BIOSECURITY PROTOCOLS OURS CONTRIBUTORS



**NEGATIVE COVID-19
certificate.**



**Disinfection of footwear
before entering the
workplace.**



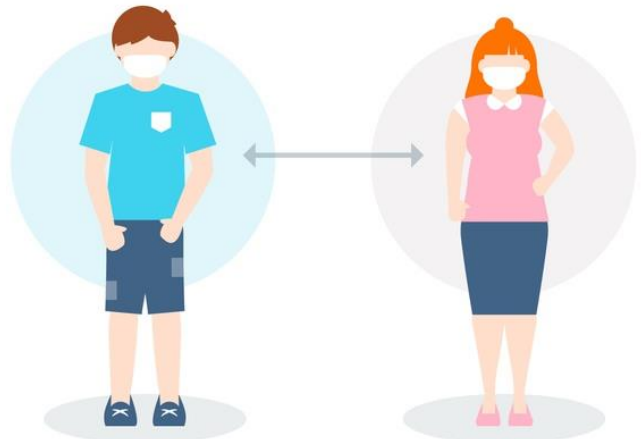
Temperature control.



**Use of mask and face
shield.**



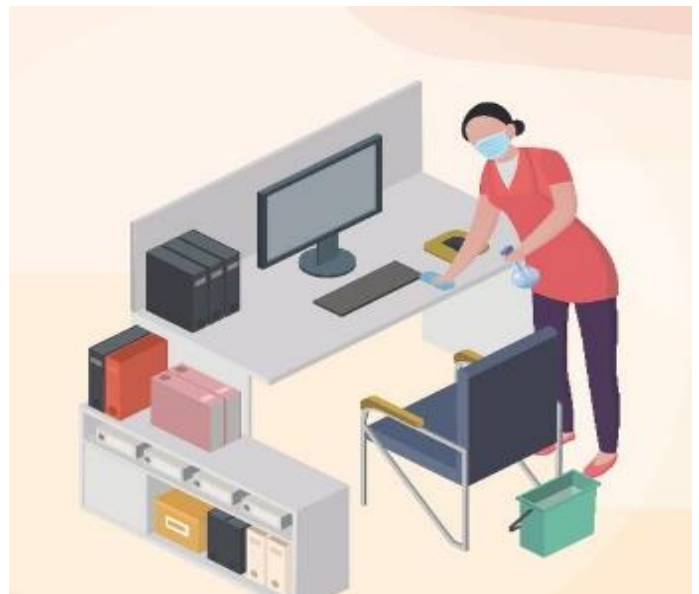
Constant hand washing



**Mandatory social distancing
Of 1.5 meters.**



Use of alcohol gel.



**Cleaning and disinfection
Of the work area.**

BIOSECURITY PROTOCOLS OF OUR PASSENGERS



Communication of the COVID-19 protocols upon arrival.



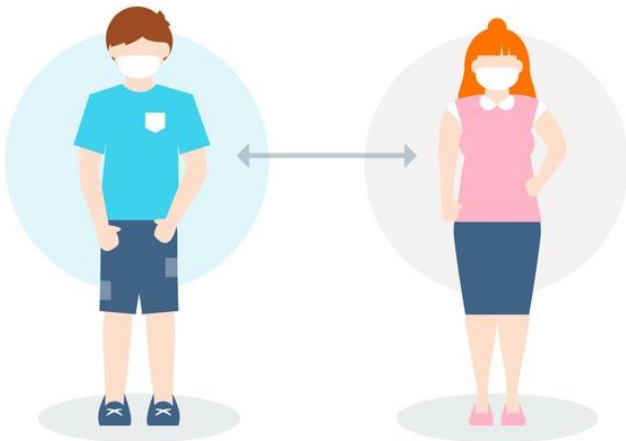
Temperature control.



Passengers must wear the mask at all times.



Use of alcohol gel.



Mandatory social distancing of 1.5 meters.



Seating distribution while maintaining social distancing (capacity 50%).



Security foil that divide the driver from the passengers.



Ventilation in mobility.